



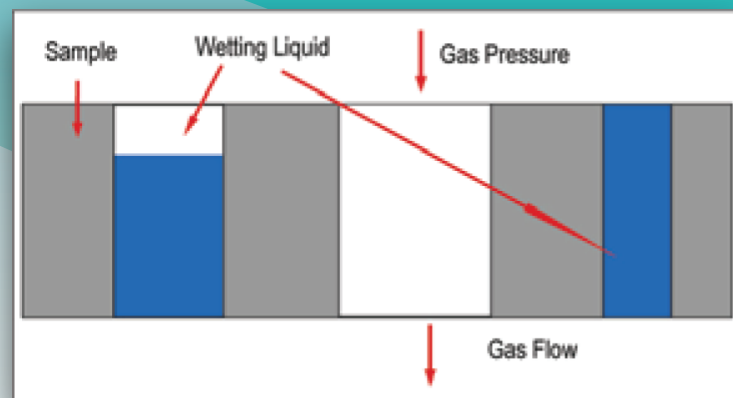
PMI Advanced Media Bubble Point Tester

*Conforms to ISO 4003
Conforms to ISO 7198
Conforms to ASTM F316*



PRINCIPLE

For a cylindrical sample submerged in a testing liquid, air pressure is slowly increased until enough pressure has built up inside of the sample to counter act the pressure of the testing liquid and pushes through the wall of the sample, forming a bubble on the outside of the wall. The pressure at which this occurs is referred to as the Bubble Point of the sample and corresponds to the largest pore in the sample.



APPLICATION

The PMI Media Bubble Point Tester is useful for quality control in the filter Media industry, as well as finding the largest through pore throat diameter of the material.

PROCEDURE

The wetted media is loaded into the chamber and the lid is tightened. The user will set the test parameters and tell the software to start the test. The software will automatically start the test and air pressure is slowly increased at a constant rate. Once the pressurized air bursts through the sample, the bubble point is recorded and reported along with the testing liquid.

UNIQUE FEATURES

- Fully automated test
- Easy to load sample chamber
- Auto detection of bubble point
- Auto fill of sample chamber with testing liquid
- Sample chamber made to order for various Media sizes
- Ventilation of test chamber available
- Automatic drain system in place
- Able to test using various wetting liquids
- Follows ISO 4003 standards

Types of Samples:

- Membrane
- Ceramic
- Mesh
- Woven/Non-woven
- Etc.

Types of Tests:

- Bubble Point

Reported Values:

- Bubble point pressure
- Bubble point pore size
- Sample Type
- Testing Liquid
- Temperature (Testing Liquid, Media)

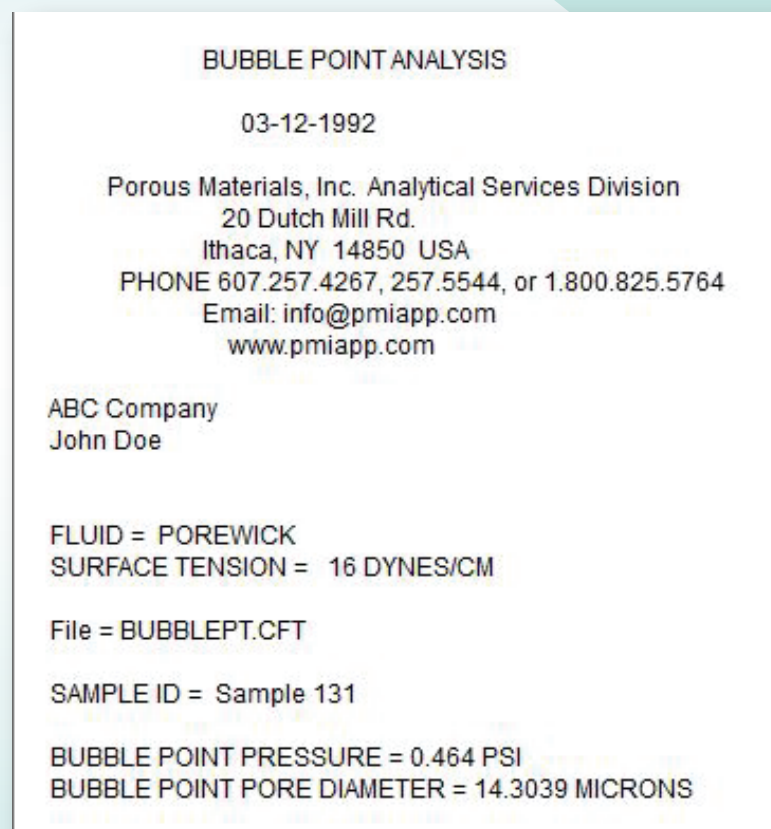


Figure 1
Data Report

INSTRUMENT

The PMI Media Bubble Point Tester is designed for ease of use. The sample holder is designed to accommodate a variety of samples based on the needs of the user. For vaporous test liquids, ventilation is available to ensure user safety. The PMI Media Bubble Point Tester can be made from a variety of materials specifically chosen to reduce rusting and limit chemical affects due to interaction with various testing liquids.

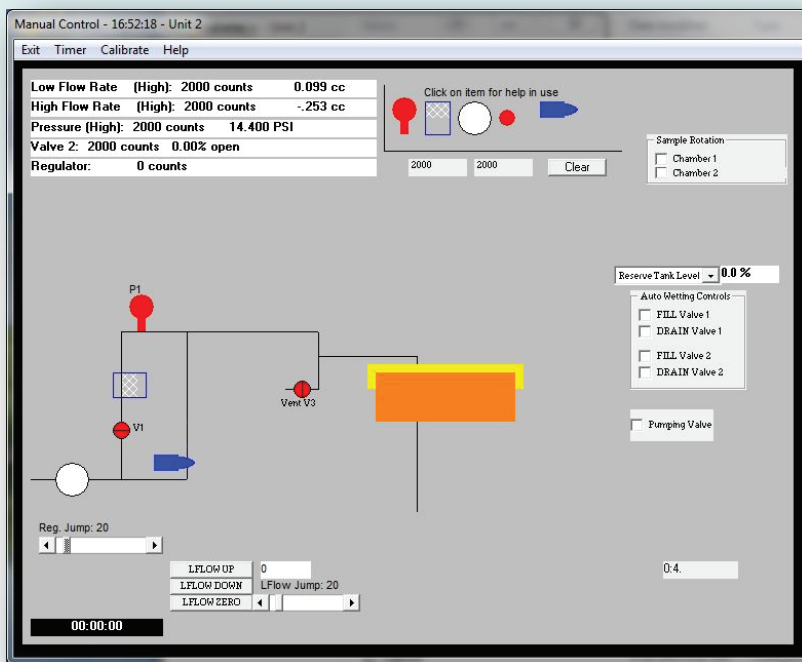


Figure 2
PMI Manual control Screen

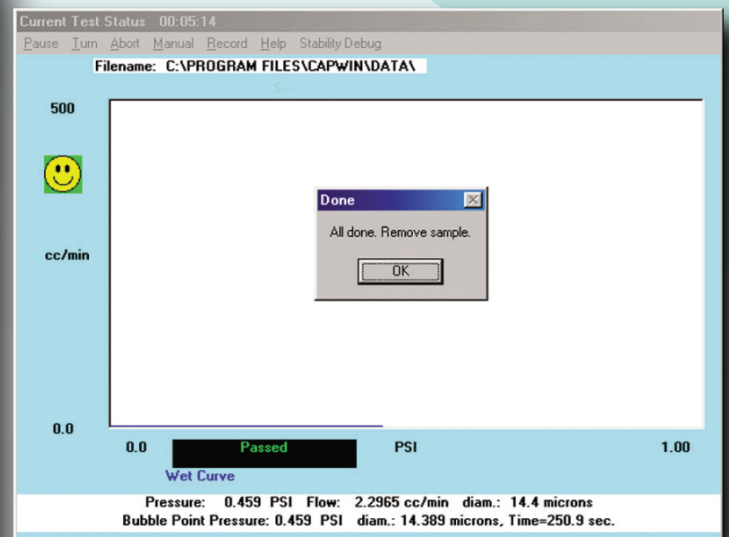


Figure 3
PMI Software Screen

FEATURES

Accommodation of a wide range of Media Sizes

- detachable head attachments, and movable clamping make this an extremely versatile machine.

Quick Loading & Unloading of Media for Speedy Testing

- The Medias are loaded in the sample chamber simply by using two levers. The horizontal lever is used to move the clamping head forward and backward to allow for Media length, and the rotating lever is used to lock the Media

Fully Automated Operation

- Little user involvement is needed

SPECIFICATIONS

- Pore Size Range: 0.1 - 500 microns (Models with pore size down to 0.013 microns also available)
- Sample Size: 0.25" - 2.5" or larger diameter
- Maximum Range: 0 - 50 psi
- Pressure Transducer Range: 0-50 psi Absolute
- Resolution: 1 in 60,000
- Accuracy: 0.15% of reading
- Mass Flow Transducer Range: 0 - 100 cc/minute
- Power Requirements: 220 VAC, 50/60 Hz
- Pressurizing Gas: Clean, dry, Compressed air or nonflammable, non-corrosive gas

SALES & SERVICE

Our sales team is dedicated to helping our customers find which machine is right for their situation. We also offer custom machines for customers with unique needs. To find out what we can do for you, contact us. We are committed to customer support including specific service products, short response times & customer specific solutions. To quickly & flexibly meet our customer's requirement, we offer a comprehensive range of services.



*Customize your Machine
Today*

The most advanced, accurate, easy to use and reproducible Bubble Point Testers in the world.

Celebrating



of solutions



20 Dutch Mill Rd, Ithaca, NY 14850, USA
Toll Free (US & Canada): 1-800-TALK-PMI (1-800-825-5764)
Phone: 607-257-5544 Fax: 607-257-5639
Email: info@pmiapp.com www.pmiapp.com